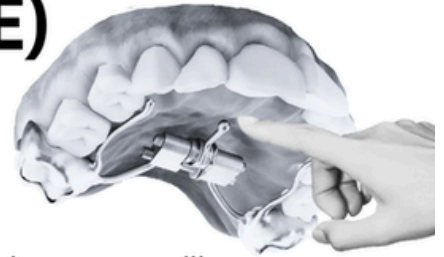


# Keles™ Keyless Expander (KKE)



Aegis Star Dental Technologies, Inc.  
286 Beacon St Unit 6, Boston, MA, 02116, USA

info@aegis-star.com  
www.aegis-star.com

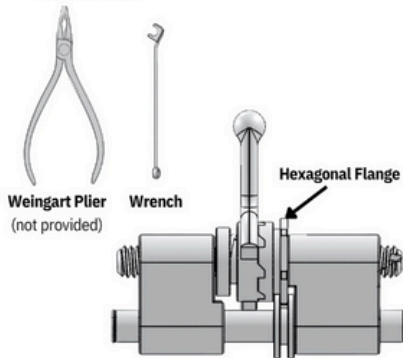


## A Rapid Palatal Expander Without a Key!

The Keles™ Keyless Expander (KKE) is a fixed rapid palatal expander used to treat maxillary transverse deficiency. Each activation expands by 0.2mm.

### Reversing the KKE Intraorally

#### 1. FAMILIARIZE YOURSELF WITH THE LABELING



The reversal process should be conducted only by the doctor

Do not use the screwdriver and the gear separator intraorally.



If reused for a different patient, the wrench must be sterilized as per the parameters below.

#### Steam Autoclave (Moist Heat)

Temperature: 121°C (250°F) or 134°C (273°F)

Pressure: 15–30 psi

Exposure Time: 121°C: 15–30 min, 134°C: 3–10 min

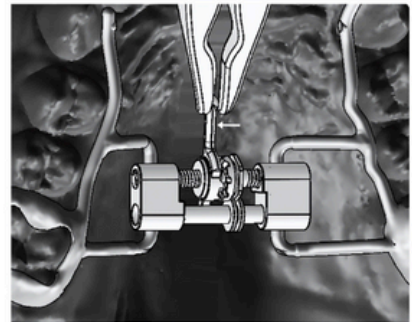
Drying /Aeration Time: 15–30 minutes

#### Dry Heat Sterilization

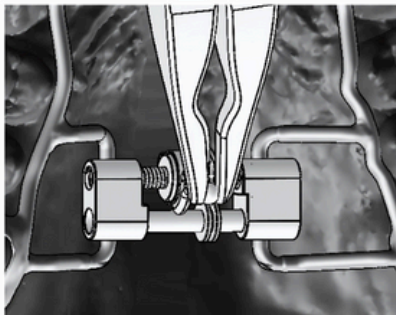
Temperature: 160–170°C (320–338°F)

Exposure Time: 60–120 minutes

#### 2. HOLD THE ARM WITH A PLIER & MOVE THE ARM TO THE LEFT

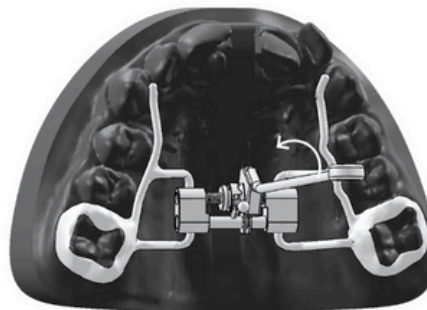


#### 3. MOVE THE ARM DOWN 90°



On the way down, ensure that the two gears do not engage

#### 4. PLACE THE WRENCH ON THE HEXAGONAL FLANGE & TURN THE WRENCH UPWARDS



#### 5. ONCE THE WRENCH IS FULLY UP, REMOVE THE WRENCH FROM THE HEXAGONAL FLANGE AND REPEAT THE PREVIOUS STEPS UNTIL THE DESIRED POSITION IS REACHED

