

# Keles™ Keyless Expander (KKE)



**Aegis Star Dental Technologies, Inc.**  
286 Beacon St Unit 6, Boston, MA, 02116, USA

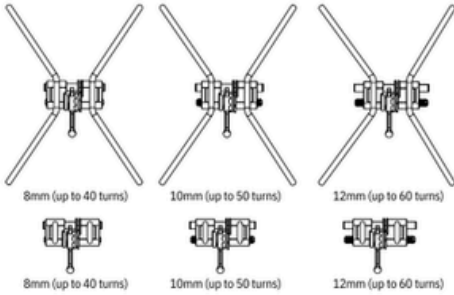
info@aegis-star.com  
www.aegis-star.com



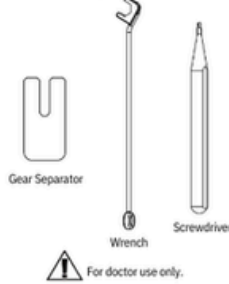
## A Rapid Palatal Expander Without a Key!

The Keles™ Keyless Expander (KKE) is a fixed rapid palatal expander used to treat maxillary transverse deficiency. Each activation expands by 0.2mm.

### KKE Options

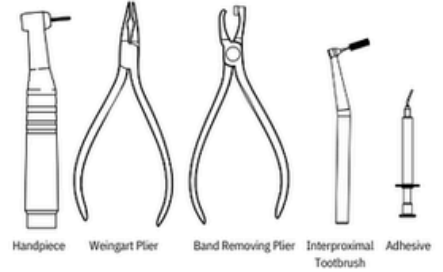


### Reversal Kit (Purchased separately)



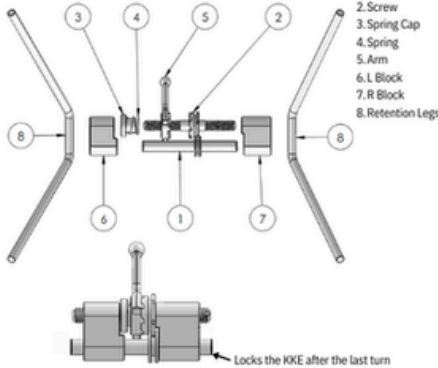
### Other Tools

Commonly found in dental practices (not provided)



## KKE Instruction For Use

### 1. COMPONENTS OF THE KKE

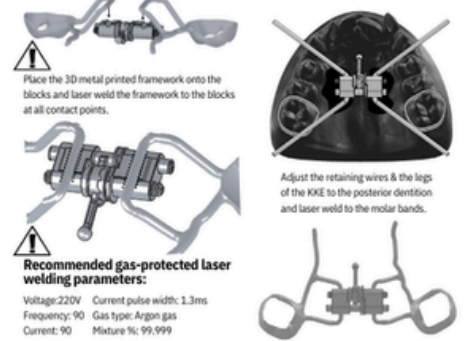


### 2. REMOVE THE PACKAGING



### 3. APPLIANCE DESIGN & CONSTRUCTION

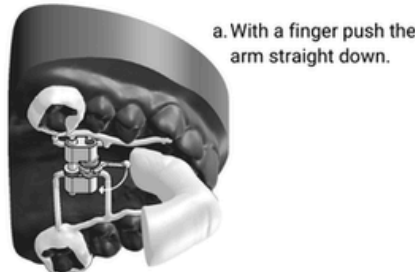
3D Metal Printed framework & KKE Manual construction of the KKE



### 4. CEMENT THE KKE TO THE DENTITION



### 5. ACTIVATING THE KKE (The patient must follow the prescribed frequency and repeat for the number of turns as instructed by the doctor)



a. With a finger push the arm straight down.

Can be performed either by the patient or by a guardian/parent.



b. Then pull the arm straight up.

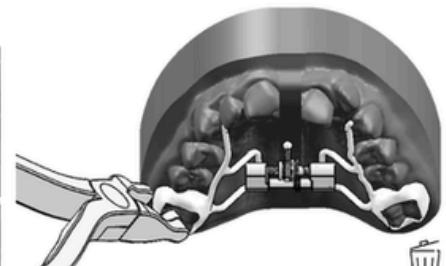
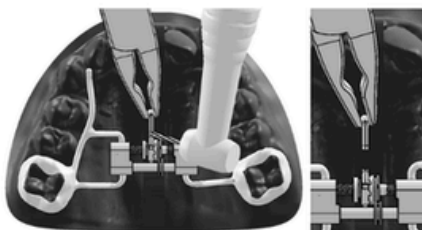
This movement is passive and will bring the arm to its initial position for the next activation.

### 6. RETENTION PERIOD WITH THE KKE



After completing the active phase of the treatment, the KKE should remain in the mouth for the duration decided appropriate by the doctor.

### 7. CUT THE ARM USING A BUR (OPTIONAL) 8. REMOVE & DISCARD THE KKE



**Disposal of Device.** After the doctor completes the treatment, the KKE must be disposed of in compliance with national and local laws.